



RAINFOREST
TRUST®

2020
ANNUAL REPORT

PROTECTING RAINFORESTS FOR SPECIES, PEOPLE AND THE PLANET



OUR MISSION

Rainforest Trust saves endangered wildlife and protects our planet by creating rainforest reserves through partnerships, community engagement and donor support.

OUR LEADERSHIP

SENIOR STAFF

DR. JAMES DEUTSCH
CEO

MARK GRUIN
VP, *Strategic Initiatives*

MELISSA HOHIMER
CFO

JAMES LEWIS
VP, *Conservation*

LESLIE VANSANT
VP, *Philanthropy*

BOARD OF DIRECTORS

DR. ERIC VEACH
Chair

EDITH MCBEAN
Vice Chair

SALLY DAVIDSON
Treasurer

DR. WAYT THOMAS
Secretary

GEOFFREY CHEN
Member

ROBERT GILES
Member through May 2020

ERIC GOODE
Member

ANN KAUPP
Member

PATRICIA KOVAL
Member

DR. THOMAS LOVEJOY
Member

JOHN D. MITCHELL
Chair Emeritus

DR. ROBERT RIDGELY
Member since May 2020

KIM STEWART
Member

DR. E.O. WILSON
Member

JEFFREY ZACK
Member

COUNCIL MEMBERS

DR. BRUCE BEEHLER

DR. GWEN BREWER

CALLIE BROADDUS

DR. THOMAS BROOKS

BRETT BYERS

DR. NIGEL COLLAR

DR. CHRIS ELLIOTT

DR. CULLEN GEISELMAN

ROBERT GILES

JOHN GWYNNE

AMBASSADOR HEATHER HODGES

DR. PANTALEON M. B. KASOMA

DR. SALLY LAHM

ALAN MARTIN

DR. RUSSELL MITTERMEIER

ROGER PASQUIER

LINDA PERRY-LUBE

SIR GHILLEAN PRANCE

STEVEN QUARLES

SCOTT RASMUSSEN

WALTER SEDGWICK

DR. SIMON STUART

DR. JOHN TERBORGH

BERNIE TERSHY

DR. DAVID WILCOVE

ROLAND WIRTH

HYRAM YARBRO

LETTER FROM THE CEO



For Rainforest Trust, as for every person and organization, 2020 was a strange and challenging year. But for us it became a year of finding strength through adversity, and we emerged stronger and with greater impact than ever.

The COVID-19 pandemic stressed our implementing partners in Africa, Asia and Latin America, slowing land purchases, preventing community meetings and cutting tourism income. We, and our donors, responded with a COVID-19 Emergency Conservation Fund to replace lost income and support critical activities such as patrols. Our partners established new protection of over 3.5 million acres through the year, down from a record 11 million in 2019 but better than 2017 or 2018. In spite of COVID, projects stayed on track, and we have already seen substantial protected area creation in 2021.

Our supporters stood by us through the year, enabling us to raise a record \$26 million and allocate it to the largest portfolio of new projects in our history. They also provided a record level of unrestricted support allowing us to end the year in the black and to maintain our commitment that all gifts not specifically unrestricted go entirely to conservation. We are deeply grateful.

During the summer of 2020 our board and staff met eight times by Zoom to hammer out a powerful new strategic plan—pledging to raise and allocate at least \$200 million during 2021-2025, protect 125 million acres including habitat for half the world's threatened birds and mammals, and safely lock up 15 billion tons of carbon, three times the U.S.'s entire annual emissions.

I joined the organization in April 2020, attracted by our mission of creating protected areas to save species and protect our planet. A friend at another conservation organization, encouraging me to take the job, called our mission "the silver bullet in conservation." Indeed, no other organization provides donors with as cost-effective and impactful a way to fight biodiversity loss and climate change.

Thank you for standing with us through this challenging year. Together we have shown that we can weather adversity and help save the world. Our work is cut out for us.

With sincere thanks and deepest respect,

James Deutsch, CEO

COVID-19

RAINFOREST TRUST LAUNCHES COVID-19 EMERGENCY FUND

The COVID-19 pandemic turned the world upside down. For Dr. Abdullahi Ali of the Hirola Conservation Programme in Kenya, this applied to both local communities and the wildlife his organization works to protect. The government-imposed restrictions to reduce the spread of the virus were especially hard-hitting on economies like those in Kenya which depend heavily upon revenues from tourism. "With the restrictions in place, things were incredibly difficult psychologically and economically for the local communities and even worse for conservation organizations as we tried to adjust to what seemed to be a new normal for us," he said. "The high demand for alternative ways to reduce prevailing poverty, hunger, and malnutrition led to unprecedented poaching which was further aggravated by suspected commercial poachers taking advantage of the chaos to conduct cross border bushmeat trade."

Many of Rainforest Trust's partners experienced similar unprecedented challenges and threats to natural resources. For the first time in our history, Rainforest Trust mobilized to provide extraordinary support outside our projects by launching the COVID-19 Emergency Conservation Fund to provide additional financial support to our partners to meet the changes caused by the virus.

COVID-19 Emergency Conservation Fund grants have focused on increasing forest patrols, staff safety, operations and the use of technology. The following are examples of some of the work supported by the fund through 2020:

- Hirola Conservation Programme in Kenya increased patrols and training in response to their poaching crisis, and purchased protective equipment such as masks so their staff can work safely.
- Yayasan Adudu Nantu Internasional (YANI) in Indonesia implemented a total of 109 days of forest protection patrols in their Nantu Wildlife Sanctuary, removing more than 60 snares set by poachers and even saving a Babirusa.
- Daluhay Daloy ng Buhay Inc. in the Philippines organized a wildlife rescue and environmental law enforcement group called SBKAL'N that ensures the safety of biodiversity and maintains the integrity of their reserves through increased patrols.
- Madagascar Primate Study and Research Group (GERP) launched 16 new community-led forest patrols in their reserves and provided hygiene kits to communities and local hospitals.
- Reserva Ecológica de Guapiaçu (REGUA) in Brazil retained key staff members who would have lost their jobs due to the tourism collapse. Now that their jobs are secure, those employees are working on plans to safely accept tourists again when travel is safe.
- Misión Tiburón in Costa Rica dedicated three people to continue patrols during the pandemic, along with boat fuel and protective equipment to ensure their team is safe while out conducting this important work.

Despite the many challenges, COVID-19 united us. Vaccinations have slowly restored some pre-pandemic normalcy, but coverage in the Global South remains low. Virus variants continue to pose threats globally, resulting in even greater pressure on natural resources and fragile ecosystems in many of the places where we work around the world. Rainforest Trust remains committed to our conservation goals and will continue to evaluate the situation on the ground with our partners to meet the evolving and emerging needs of our projects.

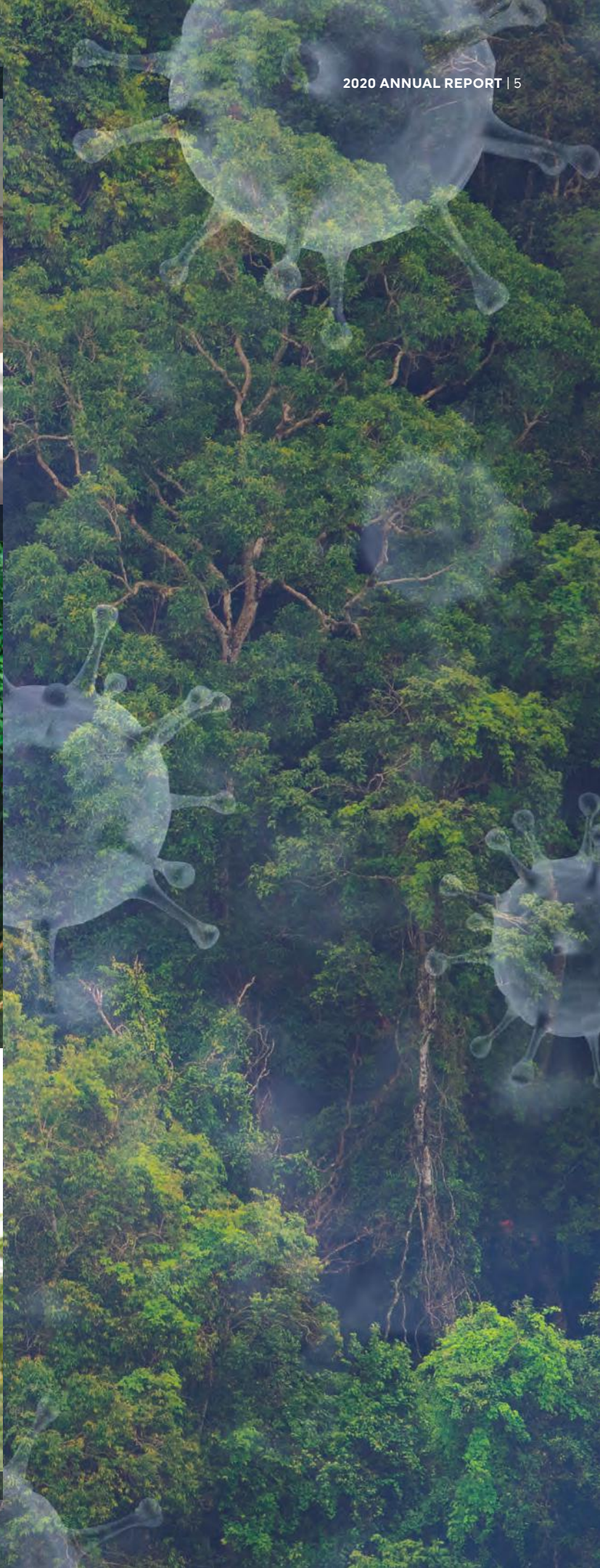
The COVID-19 Emergency Conservation Fund remains open and continues to fund requests from our partners. We are grateful to all who have generously supported this fund and for the leadership support of Edith McBean and The Louis Stewart Foundation.

PHOTOS

Top: Shark tagging by partner Misión Tiburón, Costa Rica.

Middle: The Vulnerable Babirusa of Indonesia. Photo by Craig Russell.

Bottom: Partner, Hirola Conservation Programme, removes snares in Bura East Conservancy, Kenya.



AMERICAS

FIGHTING TO SAVE THE PERUVIAN AMAZON

Nearly 60% of Peru's landscape is covered with Amazon rainforest. These biodiversity-rich forests are home to hundreds of indigenous communities, who rely solely on this land to survive. The local benefits are obvious, but the Peruvian Amazon is also vital in the global fight against climate change. The region is one of our planet's most important carbon stores, containing over 48.2 billion metric tons of carbon.

Despite the critical importance of the Amazon, deforestation to harvest natural resources and convert land to agricultural plantations is rampant. Millions of tons of carbon are released, habitat is destroyed and countless people are left with no refuge.

Over 25 years ago, Rainforest Trust began investing in the protection of the Peruvian Amazon, partnering with the Center for the Development of an Indigenous Amazon (CEDIA) on multiple projects. CEDIA guides and supports local indigenous communities through the process of gaining legal title to their land, which prevents commercial developers and land grabbers from obtaining the land and destroying the forest.

In 2020, 1,164,735.91 acres - an area roughly the size of Grand Canyon National Park - were protected by Rainforest Trust and CEDIA. This protection has expanded to over 11 million acres, an area roughly the size of New Hampshire and Vermont. When our current projects are complete, an additional 5 million acres will be titled.



PROTECTED IN THE AMERICAS

2020

1,444,792

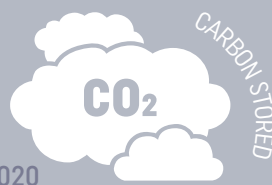


1988-2020

14,332,705

2020

95,547,077 mT



1988-2020

3,199,997,217 mT

BIRD SPECIES PROTECTED



94

2020

240

1988-2020



RAINFOREST TRUST FELLOW SPOTLIGHT

I became a Rainforest Trust Fellow because I am passionate about working with people and conserving biodiversity to improve their living conditions.

Alberto Romero (right)
CEDIA Director



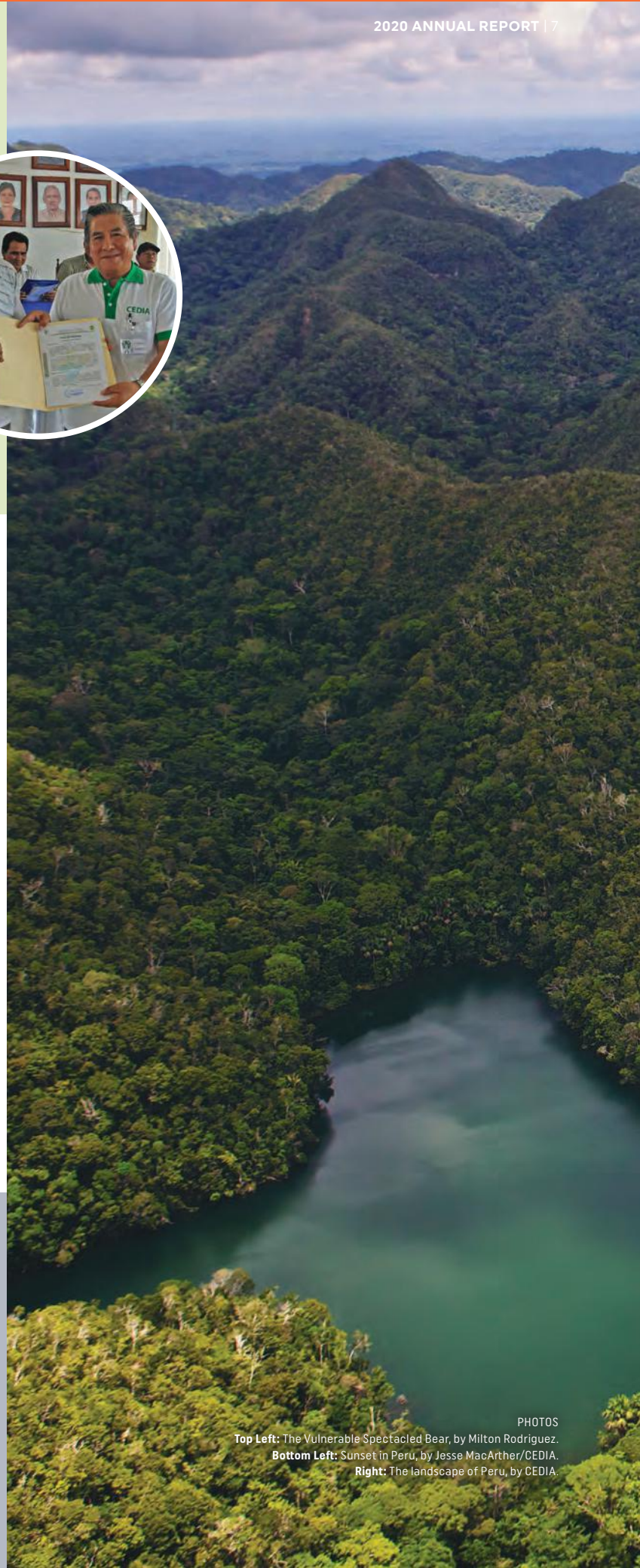
Saving the Peruvian Amazon is critical for species, communities and our planet, the pillars that underpin Rainforest Trust's mission.

Species: 3,940 unique threatened species live in the Peruvian Amazon, and 2,705 or 68% of the total are protected within our reserves including the Endangered White-bellied Spider Monkey, Amazon River Dolphin and Giant Otter.

Communities: 156 communities have gained legal title to their land and will continue to sustainably manage their ancestral forests.

Planet: 2.8 billion tons of carbon remain locked in trees and soil to the benefit of our entire planet.

Our work in Peru has been supported by our generous donors to the project including leadership gifts from Luanne Lemmer and Eric Veach, The Hugh C. and Thomas Lord Fund, Metabolic Studios, Ross and Florence Jennings; the Conservation Action Fund and the SAVES Challenge. Thank you.



PHOTOS
Top Left: The Vulnerable Spectacled Bear, by Milton Rodriguez.
Bottom Left: Sunset in Peru, by Jesse MacArther/CEDIA.
Right: The landscape of Peru, by CEDIA.

AFRICA

PROTECTING THREATENED MARINE LIFE IN CÔTE D'IVOIRE

Côte d'Ivoire's Grand-Béréby coastline and nearshore area hosts some of the most significant marine life in West Africa. Sadly, encroachment from commercial fisheries has led to the over-exploitation of fish stocks, damaging the fragile marine ecosystems.

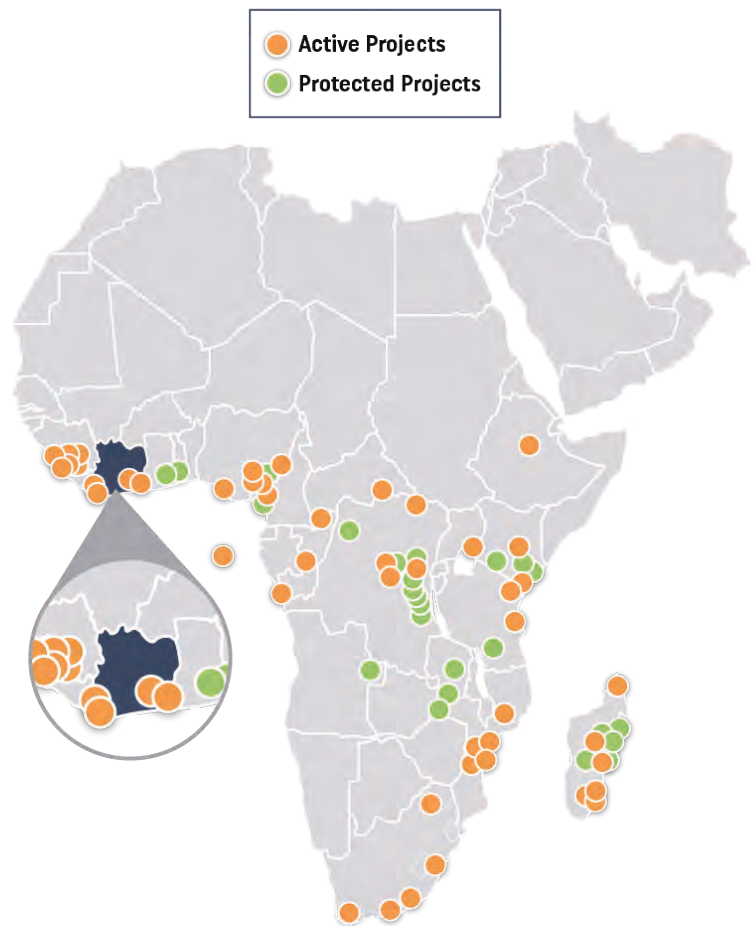
To halt this destruction, Rainforest Trust worked with our local partner, Conservation des Espèces Marines (CEM) to create the first ever Marine Protected Area in Côte d'Ivoire.

The Grand Béréby Marine Protected Area spans 640,000 acres of coastal, mangrove and marine habitat and hosts vibrant sea life. Critically Endangered Scalloped Hammerhead Sharks, Endangered Blue Whales and many others have been spotted in these waters. The beaches are one of West Africa's most important sea turtle nesting areas, hosting Endangered Green Turtles, Vulnerable Olive Ridleys and Vulnerable Leatherbacks during the breeding season. The shallow rocky reefs just offshore provide nutrition and safety for turtle hatchlings.

The new protected area is also vital for communities. CEM has incorporated the natural resource needs of the local community into the management plan for the Grand Béréby Marine Protected Area. They are educating and assisting local communities with sustainable fishery practices and increasing eco-tourism to bolster the local economy.

Rainforest Trust is continuing our work to protect this vulnerable coastline with CEM on another 1.1 million-acre Marine Protected Area.

This project was supported by our generous donors with leadership gifts from EnviroBuild, que, Don and Karen Stearns; the Conservation Action Fund and the SAVES Challenge. Thank you.



PHOTOS

Top: The Endangered Blue Whale, by Andrew Sutton.

Middle: Baby Leatherback Turtles—only 1 in 1,000 hatchlings will survive to adulthood. Photo by CEM.

Bottom: The Critically Endangered Slender-Snouted Crocodile, by Karel Bartik.

PROTECTED IN AFRICA

2020
645,911

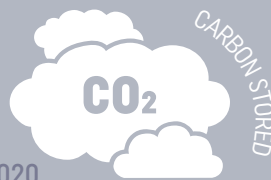


1988-2020

15,661,971

2020

27,156,542mT



1988-2020

1,335,079,788mT

BIRD SPECIES PROTECTED

34
2020

77
1988-2020



“ **RAINFOREST TRUST GUARDIAN SPOTLIGHT**

Being a Guardian makes me very proud. I am giving back to the planet and supporting my community through conservation.

Nemlin Vernest
CEM Ecoguard



ASIA

SAFEGUARDING PEATLAND IN INDONESIA

Peat ecosystems take centuries to form and are a key component of Earth's carbon cycle. These wetlands safely absorb and store carbon at a higher rate than other types of forest while also hosting a wealth of biodiversity.

The majority of tropical peat habitat is found in Southeast Asia, and unfortunately, this habitat is being cleared, drained and burned for agricultural development and palm oil plantations. When they are intentionally burned, peatlands release centuries' worth of stored carbon into the atmosphere.

Rainforest Trust has made protecting the peat ecosystems of Southeast Asia, and the beautiful wildlife they support, a conservation priority. In January 2020, we worked with our local partner, Yayasan Konservasi Rare Aquatic Species of Indonesia (YK-RASI) to establish the 106,544-acre Aquatic Reserve of Pesut Mahakam Habitat. The new protected area encompasses both critical terrestrial habitat, like peat swamps and forests, as well as riverine ecosystems.

The diversity of the landscape ensures protection for a wide range of species, including at least 298 bird species, 147 endemic fish species, 27 reptile species and 5 primate species, such as the endemic Endangered Proboscis Monkey and Critically Endangered Bornean Orangutan. Most importantly, nearly the entire population of a Critically Endangered subspecies of the Irrawaddy Dolphin that exists only in the Mahakam River will find safety in the reserve.

Our partner is also working with local communities to sustainably maintain the natural function of the swamps and riparian forest, allowing improved water quality and safe management of aquatic resources.

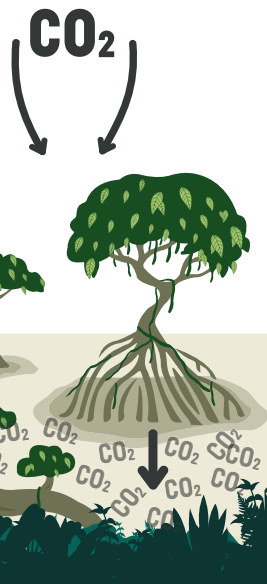
This success is a huge step in our work to conserve threatened peatland and is pivotal in keeping carbon stored, protecting species and ensuring the health of communities.

This project was supported by our generous donors with leadership gifts from Gerald and Rosemary Bradley, Lawrence Thompson; the Conservation Action Fund and the SAVES Challenge. Thank you.



PHOTOS
Top: The Endangered Proboscis Monkey, by Kiwisoul.
Bottom: The Mahakam River Dolphin, by YK-RASI.
Right: A village in the wetlands of Indonesia, by YK-RASI.

Peat ecosystems absorb **2X THE CARBON OF A NORMAL FOREST**
90% of which is stored underground



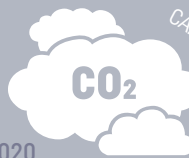
PROTECTED IN ASIA

2020
1,428,317



1988-2020
4,298,602

2020
200,173,38



1988-2020
582,825,97

“ RAINFOREST TRUST GUARDIAN SPOTLIGHT

Working in the field can sometimes be a risky job, but I want to fight to preserve my children's future and ensure they have a healthy and safe planet to live and grow.

Darwis Jaya Putra
YK-RASI River Guard



386mT
CARBON STORED
976mT

BIRD SPECIES PROTECTED
66
2020
144
1988-2020

MAMMAL SPECIES PROTECTED
82
2020
153
1988-2020

AMPHIBIAN SPECIES PROTECTED
3
2020
31
1988-2020

SUPPORTER SPOTLIGHT

CHUBB CHARITABLE FOUNDATION

Rainforest Trust launched a new partnership with the Chubb Charitable Foundation to support our important conservation work. In December, Chubb Charitable Foundation announced a \$500,000 grant to the Conservation Action Fund to focus on urgent initiatives to protect critical habitats that would otherwise be used for development, agriculture or natural resource extraction.

Our organizations were drawn together because of our shared goals and commitment to saving species, fighting the climate crisis, and supporting local people. Having the strength of a global brand like Chubb behind our work adds to the urgency and impact.

"Chubb is pleased to support Rainforest Trust. Their mission is aligned with Chubb's commitment to strengthen the resilience of communities and protect biodiversity against the effects of climate change," said Lori Dunstan, Vice President, Global Corporate Giving at Chubb.

Chubb, its employees and its charitable foundation continue to demonstrate their support for a wide range of environmental philanthropies and volunteer activities in local communities around the world. Their grants have helped preserve sensitive lands and habitats, finance green business entrepreneurs, and

support educational programs that promote a healthy and sustainable environment, both domestically and globally.

Together we have already had positive results in Indonesia and Brazil. We look forward to protecting much more of the planet and saving biodiversity together in the future.



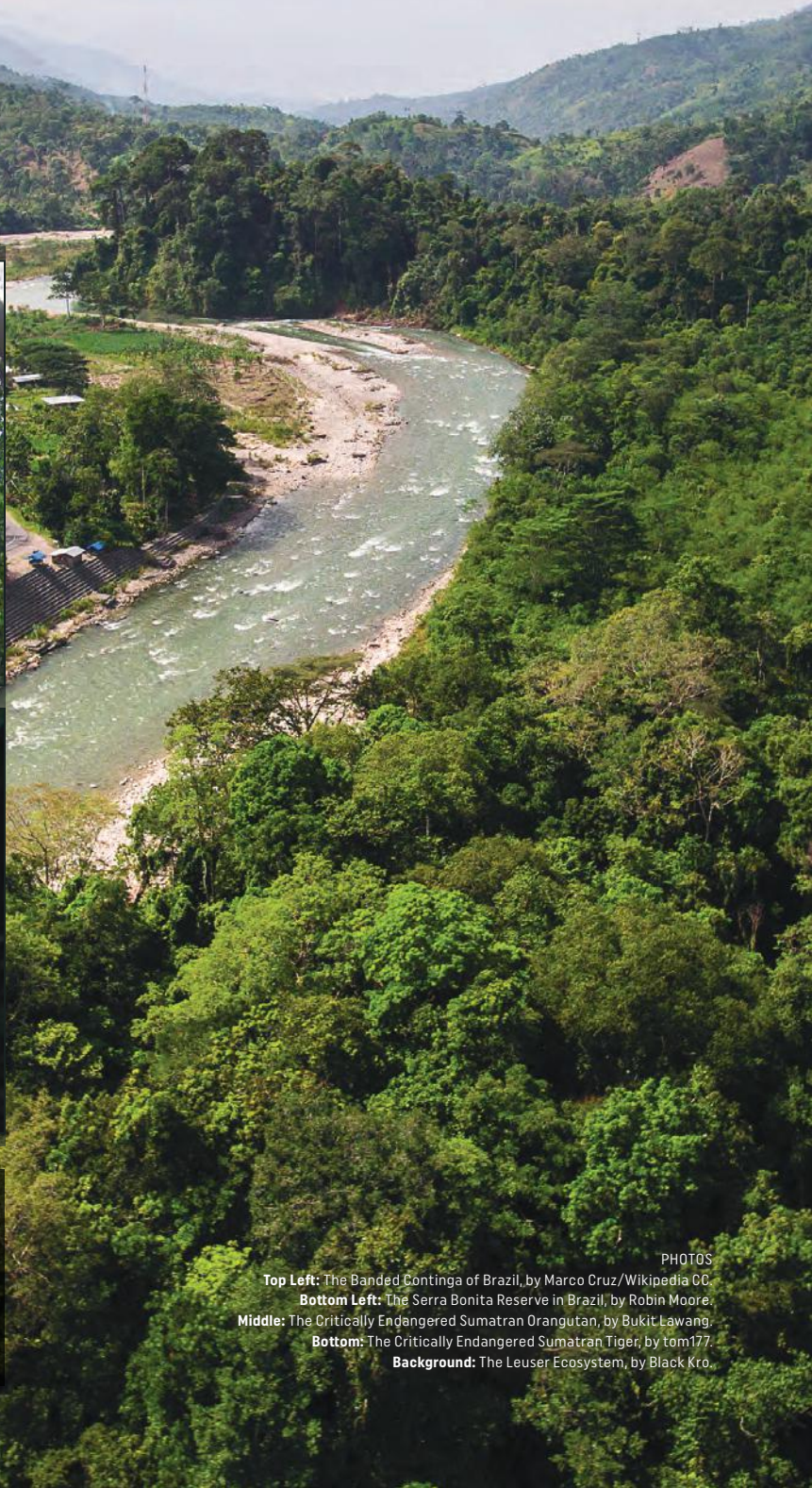
Only 7% of the Brazilian Atlantic Rainforest remains today. With Chubb's help, new properties will soon be protected.

“Rainforests are one of Earth’s most critical natural resources, not only for the diversity of life they support but because they provide valuable services to people and communities, such as erosion prevention and flood control. Protecting rainforests is also one of the most effective ways to prevent the release of carbon that causes climate change.”

– Lori Dunstan, Vice President, Global Corporate Giving, Chubb



With the support of Chubb, we were able to purchase important rainforest habitat in the Leuser ecosystem, the only place on earth where orangutans, tigers, rhinos and elephants coexist.



PHOTOS

Top Left: The Banded Continga of Brazil, by Marco Cruz/Wikipedia CC.

Bottom Left: The Serra Bonita Reserve in Brazil, by Robin Moore.

Middle: The Critically Endangered Sumatran Orangutan, by Bukit Lawang.

Bottom: The Critically Endangered Sumatran Tiger, by tom177.

Background: The Leuser Ecosystem, by Black Kro.

SAVES CHALLENGE

SAFEGUARDING AREAS VITAL TO ENDANGERED SPECIES



Scaling Impact through the SAVES Challenge

In 2016 an anonymous benefactor of Rainforest Trust recognized that the scale and speed of our efforts to save habitat and species were insufficient to stem the twin catastrophes of our time, biodiversity loss and climate change. They offered \$50 million over 5 years, but only if we could raise a matching \$50 million and invest the \$100 million in new projects. Together we called this the SAVES Challenge—Saving Areas Vital to Endangered Species.

This was a heavy lift for an organization which had previously been raising and allocating only a few million dollars a year to several projects. But thanks to the extraordinary support of all of our donors and the hard work of staff, board, and partners, we completed this task in September 2020. The result was more than \$107 million invested in projects that will ultimately protect 30.3 million acres under SAVES, and will have an extraordinary impact on species.

The world will forever owe a debt of gratitude to this extraordinarily far-sighted and generous individual, and indeed to all our donors and partners. We salute and thank you!

2016 - 2020
\$115.5M
 SAVES Challenge
 Combined Investment

2016 - 2020
24.9M
 Total Acres in Progress

2016 - 2020
5.4M
 Total SAVES Acres
 Protected

2020
2.9M
 Total SAVES Acres
 Protected

OUR SUPPORTERS

Thank you to the many people who supported our work in 2020. Our success was powered by your kindness and generosity. We especially would like to thank the following for their leadership support:



Aaron & Lisa Bloch
 Alan & Patricia Koval
 Alicia Streger
 Ann E. Sullivan
 Anna McWane Charitable Foundation
 Annette & Stuart Levey
 Beaver Family Foundation
 Bob & Peg Ridgely
 Callie Broaduss
 Carl Haefling
 Catherine C. & George C. Ledec
 Catherine Marie Warner & Luiz André Barroso
 Christine Carr
 Christopher Bonavico
 Clarice & Richard Weinberg
 Clifford Beltzer
 Col. Charles & Jacqueline Probst
 Cynthia Bergstein
 Cynthia Starr
 Dale Henderson
 Daniel Pike
 David Degazio
 David Grill
 Dermot Cooper
 Diana Visser
 Diane J. Schott
 Diane R. Krause
 Dolan Junt Family Fund
 Don & Karen Stearns
 Donald Tucker
 Doolin Foundation for Biodiversity
 Dr. Cullen Geiselman
 Edith McBean
 Edward L. Golding & Linda R. Golding
 Ellen Scriven & Paul G. Smith
 Elliotte Harold
 EnviroBuild
 Eric Goode
 Fisher Family
 Gale Page & Frank Smith
 George Loening
 George M. Jett
 Harvey Family Charitable Foundation
 Huang Chen Foundation
 Hunden Hawes Family Fund
 In Loving Memory for Richard R. Bates MD
 J. Edson Pinto
 Jared & Mayte Bluestein
 Jeffrey Zack
 Jen & Don Reynolds
 Jen & Matt Gaarder-Wang
 Jennifer Puck & Robert Nussbaum
 John D. & Katherine Mitchell
 John R. Zey
 John Tumlin
 Johnson & Haefling Family Foundation
 Jon Spar
 Josh Sohn & Dr. Amy Palin
 Julian P. & Katharine E.S. Donahue
 Kara Brockmeyer
 Kathryn Moran
 Kaufman Family Foundation
 Keith & Janice Wiggers
 Ken Hu
 Kevin Casey & Constance Campanella
 Kira Brayman
 Laura Deer & Dave Nelson
 Lauren Kickham Consulting
 Lee A. Nettke-Martin & J. Barry Martin
 Lee Family Foundation
 Leslie Oelsner
 LeUyen Pham
 Lisa Climo
 Luanne Lemmer & Eric Veach
 Luchita Mullican
 Lynn A Glesne
 Marcus Peinado
 Mari Epstein
 Mark & Susan Stutzman
 Mark M. Rich
 Melissa Barshop
 Meredith James
 Michael & Jessica Wilson
 Michael & Sophie Hayes
 Michael Shafir
 Mike & Brigit Grimm Charitable Fund
 Myron Chadowitz
 Nick Rosenthal
 Nina Geneson
 Norma & Jim Ewing
 Nuri & John Pierce
 P. Ann Kaupp
 Parod Family Fund
 Patience & Tom Chamberlin
 Petchers Foundation
 Philip C. & Joann Hawley
 Philip Spory
 Pooja Sheth
 Pramod Thammaiah
 Professor Paul F. Torrence
 Randolph & Shengchih Yeh
 Rebekah Emanual & Michael Shafir
 Red Butterfly Foundation
 Rick & Christian Olson Family Fund
 Robert & Nita Sell
 Robert & Rita Colwell
 Robert Ferguson & Julie Evans
 Robert Stolzberg & Paula Berman
 Ron & Linda Barchet
 Rona Fried
 Ronald R. Cicerello
 Ronnie & Steve Kanarek
 Ross & Florence Jennings
 Sally F. Davidson
 Sayta Chandrasekar
 Scott West
 Sean Malahy & L. Taylor Phillips
 Seltzer Family Foundation
 Shrenik Shah
 Speke Wilson
 Stanley Watt & Karen Guo
 Steven Ashelin
 Susan M. Carey
 Susan Masta & Jay Withgott
 Suvarna & Atul Tulshibagwale
 Terry & Soni Baltimore
 The Draper Foundation
 The Louis Stewart Foundation
 The Quisel Snyder Family
 The Reissing Family
 The Watson Foundation
 TRA Fund
 Wayt & Toni Thomas

Though not listed here, we are also extremely grateful to over 65 additional major supporters who wish to remain anonymous, as well as the many supporters who gave through the Combined Federal Campaign (CFC).

CORPORATE PARTNERSHIP

CORPORATE CONSERVATION CIRCLE

Rainforest Trust believes that we are all stakeholders in protecting our planet's most threatened tropical forests and endangered wildlife. Our corporate partners are committed to conservation, sustainability and a greener world, and significantly support our work by helping to purchase and protect real acres of tropical rainforest.

CHAIRMAN LEVEL

Endangered Species Chocolate
EnviroBuild
Good Money
GreaterGood.org

PRESIDENT LEVEL

Big Life Journal
iam8bit
Pura Vida
que
Sambazon
Skybound Game Studios

DIRECTOR LEVEL

1% For the Planet
Almond Impact Ltd
Ariel Premium Supply
ArisGlobal
BTS USA, Inc
Cocalero / Intrepid Spirits
Coronet LED
Credit Suisse
Ecolibrium
Edge Impulse
Electric Bike Review
Everbloom Studios
Field Guides
Flooring Superstore
Global Returns Project
Hamilton Miller Investments
Happy X Nature
Harney and Sons
Jack Mason Watches

Ka'chava
Krave Beauty
Lifeboost Coffee
LiveTime Learning
Loopy Cases
One Million Acres
One Tribe
OneUp Components
Oxygen Global
Passions of Paradise
Petfive Brands
Pistils Nursery
Pivotal Software
Rainforest Ceramics
Red Savannah
Solios Watches
Sunflwr
SunSoil
Tasmanian Pure Vodka
The Bailey Company
The Modern Agent
Titan Home Realty
Tito's Handmade Vodka
Zoo Atlanta

PATRON LEVEL

Addictive Wellness
Allied Control
Alpha Dynamica
Alt Theory
Associated Hemp
Bielawski & Hartwich GbR /
Narah Soleigh
Bijoux SD
Bird and Knoll
Bobble Digital
Boneshell

Chufly
Convindo Corporate Housing
Copper Branch
Cumberland Kayak
CuleM Watches
Daniel Andersen Websites ApS
Earth's Care Natural Products
EcoVibe
Eleos Compliance Ltd
Evergrow Christmas Trees
Exige International
Global Green Tag International
Grounds for Change
In Search of Small Things
Jade Industries
Jungle Jewel Exotics
Laguna Beach
Lyonsleaf Ltd
Mantic, Inc.
Nails Inc London
Naturealm
Northstar Investment
Novacom
Olympian Exotics
Packmat
Palette Arch
PaperCraft World
Paul Clarke Inc
Pavilion Assets/Vonadhona
Perfect Supplements
Rainforest Cruises
Readercoin
Rekniyh s.r.o.
Red-Inc
Revie
Richie Graham Photography
Sacred Sauce

Silver Falls Sustainability
SRL Publishing
Sugarhill Brighton
Tapir Apps
Teem
The Meet Group
Trio Media
Tropical Tundra
Ultralight Outdoor
Urban Art Chicago
Wild Latitudes
Wild Side Design Co.
Xtinctio
Zero Waste Store



The Conservation Circle is Rainforest Trust's premiere corporate giving program. Partners include businesses and organizations who support conservation and want to make a positive difference for our planet. Conservation Circle partners provide crucial financial support for our most urgent conservation projects.

IPS & FOUNDATIONS

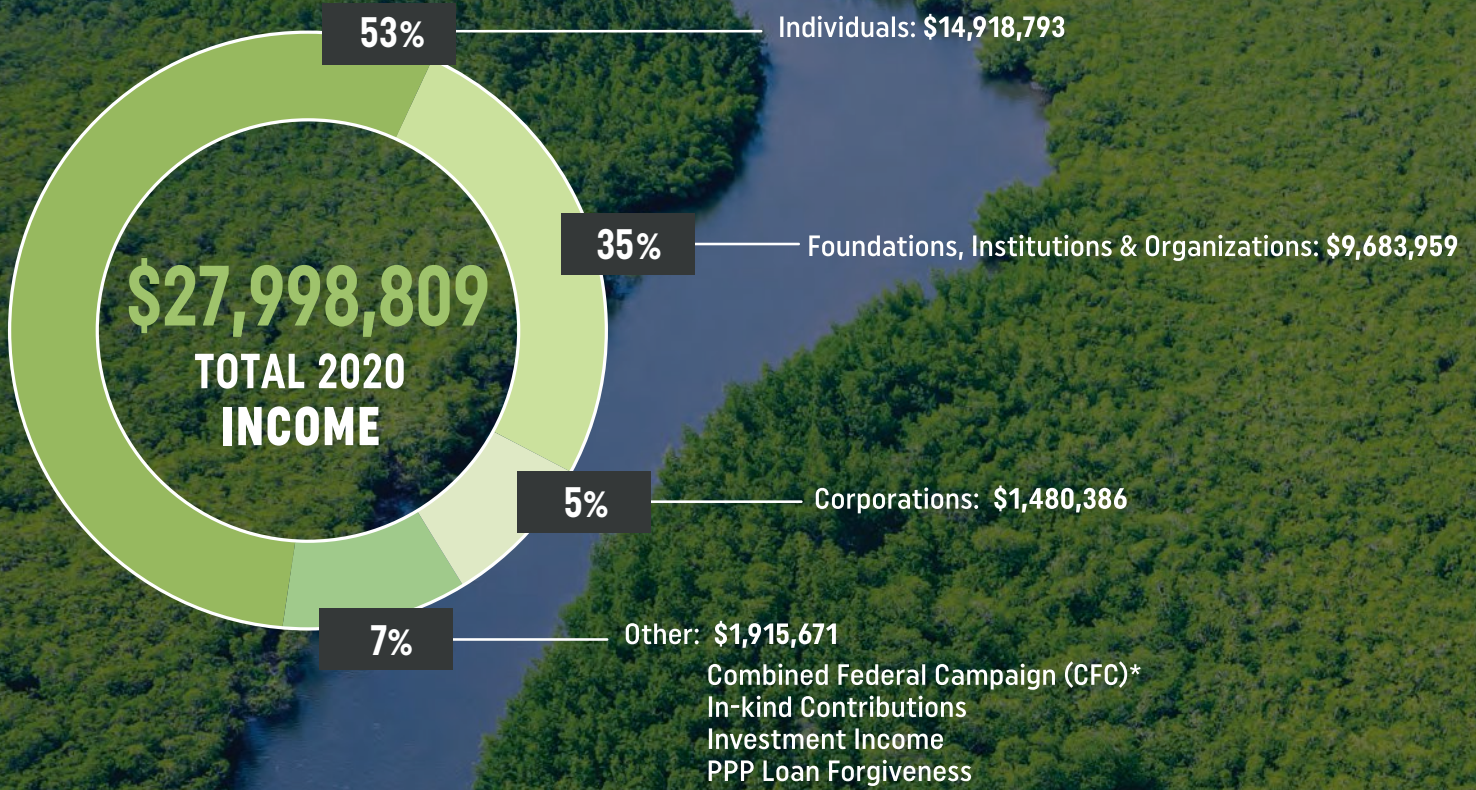
FOUNDATIONS

Rainforest Trust is so grateful for the generous support from foundations. Our critical work would not be possible without these foundations continuing to demonstrate their commitment to species, communities and the planet.

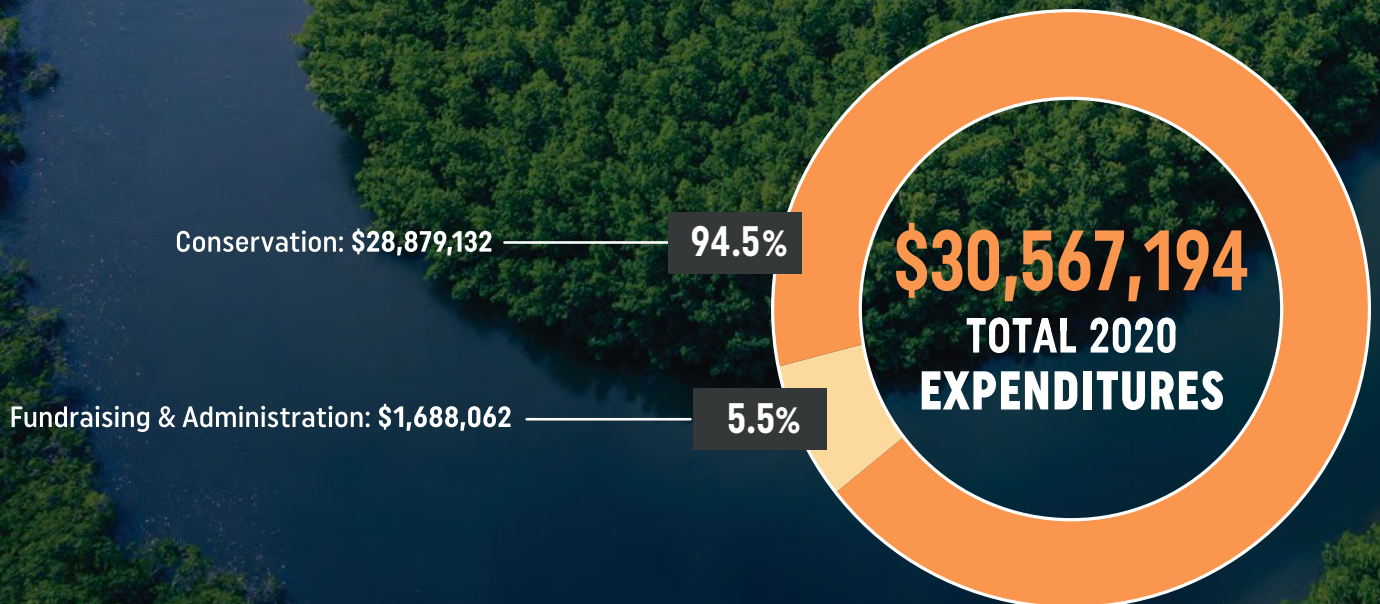
Actions@EBMF Charitable Trust
Aristotelian Foundation
Bobolink Foundation
Capital One Foundation
Carl E. Kessler Family Foundation
Chubb Charitable Foundation
Earth Alliance Foundation
Finley's Green Leap Forward Fund
Global Conservation
Hawaii Community Foundation
Hugh C. and Thomas Lord Fund
Infinity Foundation
James M. and Margaret V. Stine Foundation
Leaves of Grass Fund
Little Feet Foundation
Louis Stewart Foundation
March Conservation Fund
Marin Community Foundation
Nina Abrams Fund
Re: wild (formerly Global Wildlife Conservation)
Ryan Memorial Foundation
Shekels Charitable Foundation
Sierra Club Foundation
Smoke Rise Foundation
The Barrett Family Foundation
The James and Rebecca Morgan Family Foundation
The Marshall-Reynolds Foundation
The Moses Feldman Family Foundation
The Ohrstrom Foundation
The Rose and David Dortort Foundation
The Spurlino Foundation
Troper Wojcicki Foundation
Whispering Bells Foundation

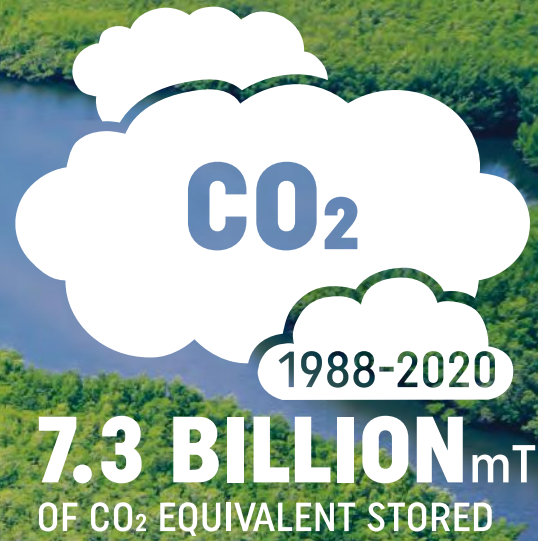


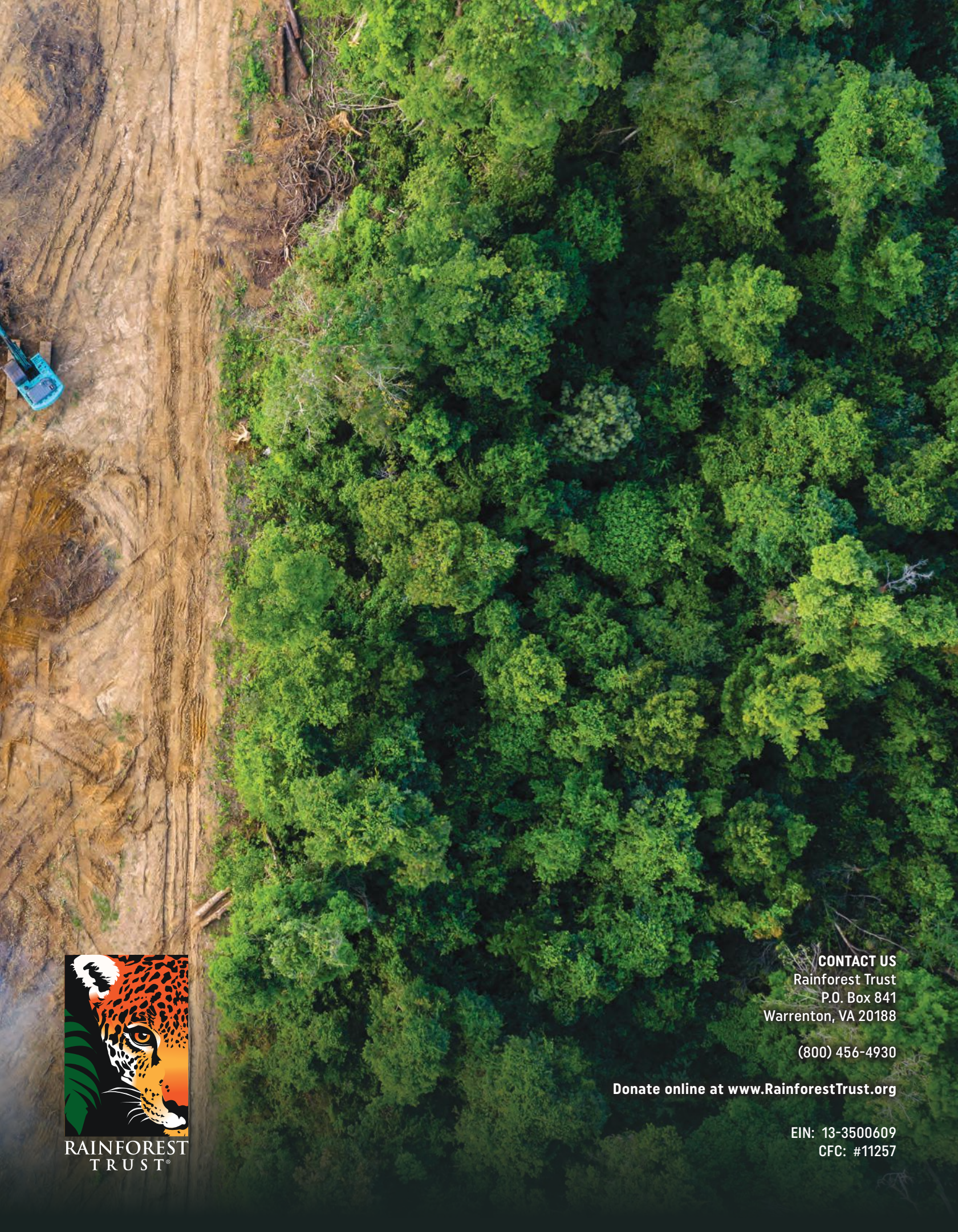
FINANCIALS & STATS



* Rainforest Trust would like to thank our supporters who gave through the Combined Federal Campaign (CFC). You generously donated \$88,336 to support our work. (Rainforest Trust's CFC #11257)







RAINFOREST
TRUST®

CONTACT US
Rainforest Trust
P.O. Box 841
Warrenton, VA 20188

(800) 456-4930

Donate online at www.RainforestTrust.org

EIN: 13-3500609
CFC: #11257